

*Model A
Restorers
Club*



Restore, Preserve, Exhibit, Drive and Enjoy

the

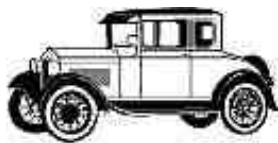
Model "A" Ford



Fox Valley Region

Founded 1980

FOX VALLEY REGION



Restore, Preserve, Exhibit, Drive and Enjoy

the

Model "A" Ford

Our Club

Founded in 1980, the Fox Valley Region of the Model "A" Restorer's Club is dedicated to the restoration and preservation of the Model "A" Ford. Our Club includes old car fanciers, young and old, who run the gambit from "drivers" to folks who can fix and restore. We own and drive a variety of Ford Model "A" and "AA" cars and trucks, which include many of the body styles offered during the 1928 – 1931 production run. Ownership of a Model "A" is not a requirement of membership, however we are restorers, not rodders. Anyone who enjoys Henry's Ladies is welcome to join the Club.

Our Mission

We Restore, Preserve, Exhibit, and Drive Model A Fords.

Club Profile

The Fox Valley Region is a family organization that welcomes folks with decades of Model "A" experience, as well as the children of our youngest members. Club activities include participation in community parades and events, automobile tours, overnight trips, day outings, and dress-up dinner events. **We are actively engaged in our community through sponsorship of several college scholarships annually.**

The Fox Valley Region invites everyone interested in Model "A" Fords to join our Club and our old car fellowship. **Membership dues are \$20, annually**, per family unit. Members receive a monthly newsletter and are encouraged to join in at club events and tours. Membership in the national Model "A" Restorer's Club (<http://www.modelarestorers.org/>) is a requirement of Regional membership.

Please join the fun by completing the attached application and mailing it to:

Phred & Bonnie Hollister

102 Lewis Court

St Charles, IL 60174

or

**contact Region President, Phred Hollister,
at (630) 513-8460**



Regional Information At:
<http://www.foxvalleymarc.com/>



Membership Application

Last Name _____

First _____ Spouse _____

Children _____

Address _____

City _____ State ____ Zip _____

Phone (_____) _____

Email _____

Model "A" Ownership*

1. _____
Year Model

2. _____
Year Model

3. _____
Year Model

* Current ownership of a Model "A" Ford
is not a requirement of membership.

Membership Requirements

- ✓ Membership in the national Model A Restorers Club.

